

My Community

I am a part of my community because I

I am a part of my school community, this is my school

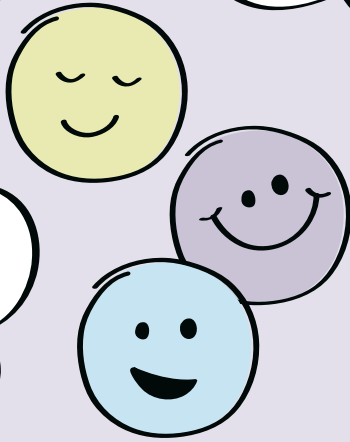
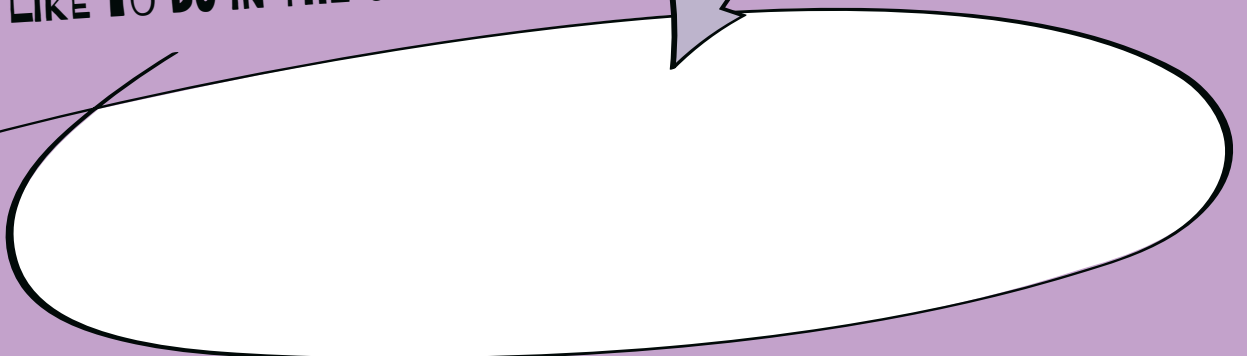
My religion means I am part of a community

Are you part of any other communities?

After school I take part in

During school I am part of

IF YOU'VE ANSWERED NO TO ANY OF THE ABOVE THEN WHAT WOULD YOU LIKE TO DO IN THE COMMUNITY?





My Community

**Talk about the term community
and what it means.**

**Discuss in further detail if they are
not part of anything and what support you
can offer them to be a part of something,
both inside and out of school.**

**What are their wishes for
their community?**